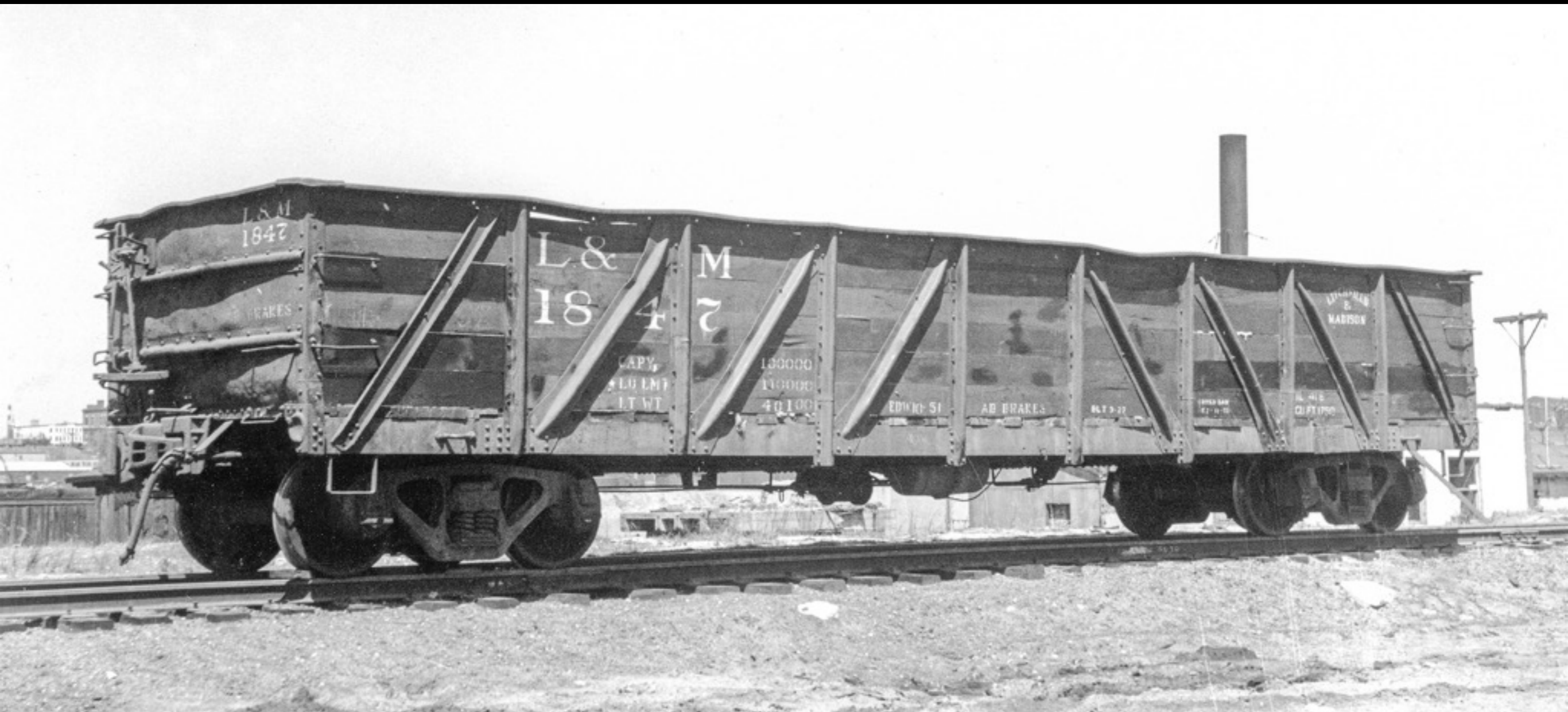


Kitbashing USRA-design Gondolas

Building a Litchfield & Madison Gondola



Ted Culotta
St. Louis RPM
Collinsville, Illinois
20-21 July 2018

Bob's Photo

Thank you

- Randy Hammill
- Richard Hendrickson
- Bob Hundman
- James E. Lane
- Jerry Stewart
- Bill Welch

- Mike Skibbe

Kitbashing USRA-design Gondolas

Building a Litchfield & Madison Gondola

If you are reading this somewhere besides the meet at which it was presented, be aware that there is a demonstration component not included in this file.

This file will be posted to:

prototopics.blogspot.com

This file will be updated as my model is completed

Kitbashing USRA-design Gondolas

Building a Litchfield & Madison Gondola

Some of what is shown here may be perceived as the “long” way to arrive at the finished product. The goal here is not to provide the easiest route, but rather to challenge the modeler to expand the set of skills in his arsenal.

You may find you wish to proceed a different way. There are numerous ways to arrive at the same finished model. Choose the path that makes the most sense for you.

Kitbashing USRA-design Gondolas

Building a Litchfield & Madison Gondola



The image that started it all... courtesy of Randy Hammill

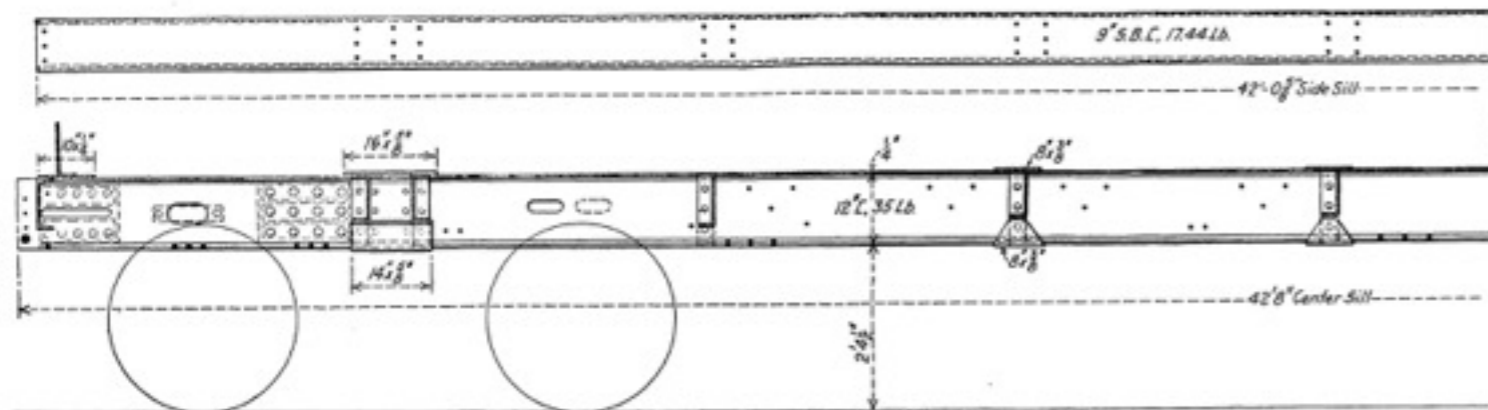
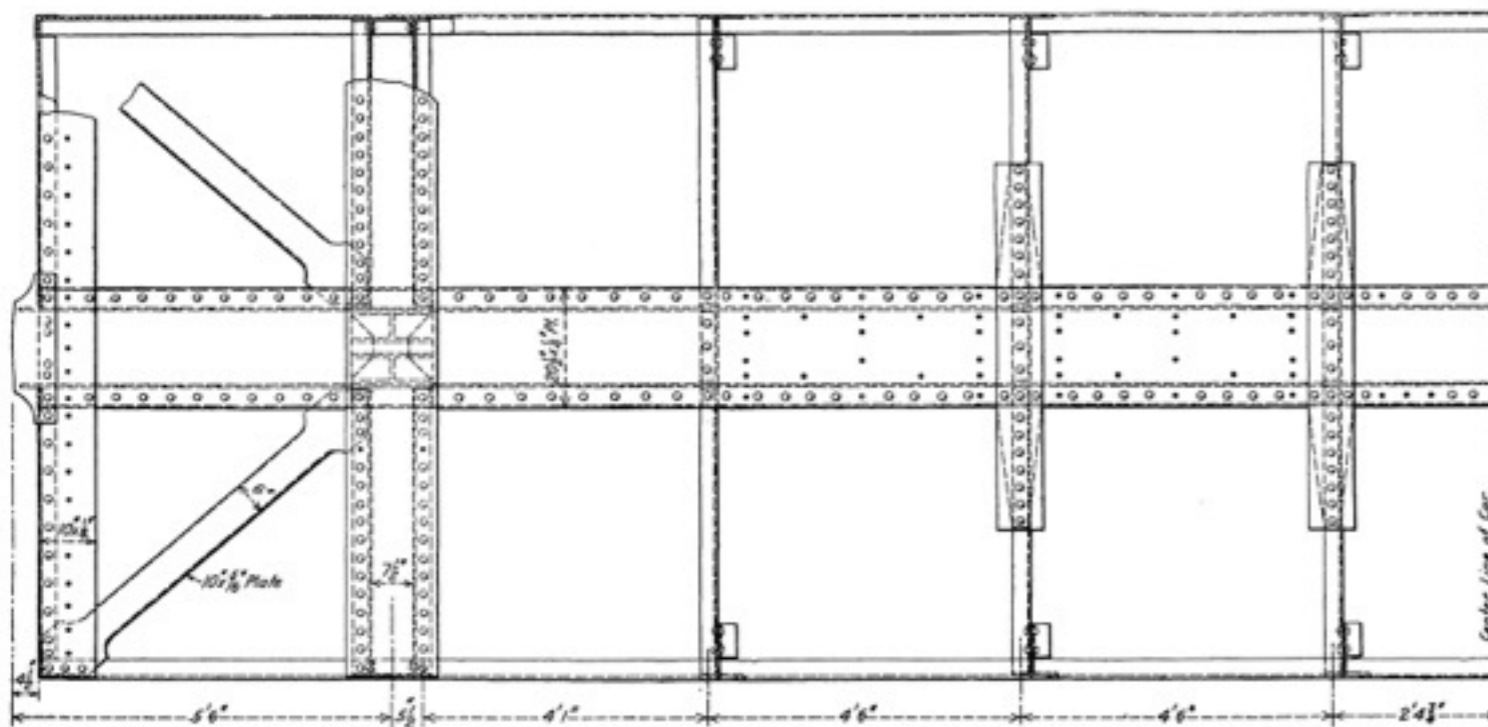
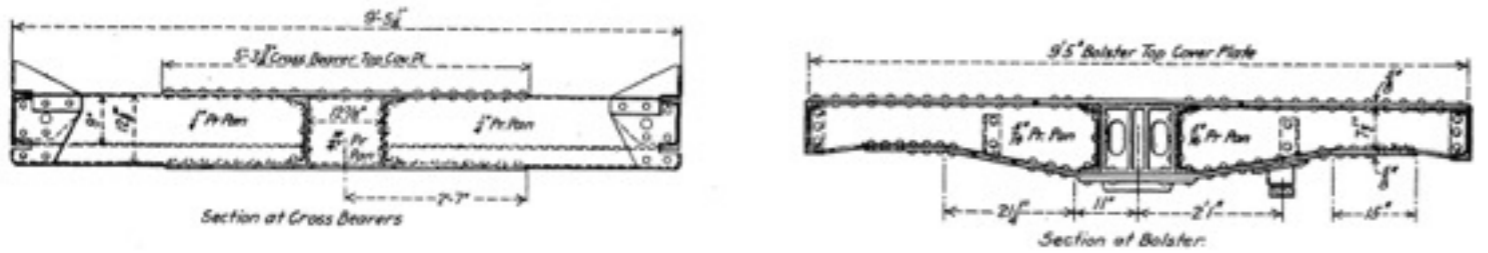


Fig. 2869—Steel Underframe for 50-Ton Gondola Car Shown in Fig. 2868.

Kitbashing
USRA-design
Gondolas
The prototype

Kitbashing USRA-design Gondolas

Louisville & Nashville

73000-74999



Kitbashing USRA-design Gondolas

St. Louis — San Francisco

1,000 cars; 85000-85999



Charles Winters Collection

Note replacement side discharge doors and “narrow” corners of ends

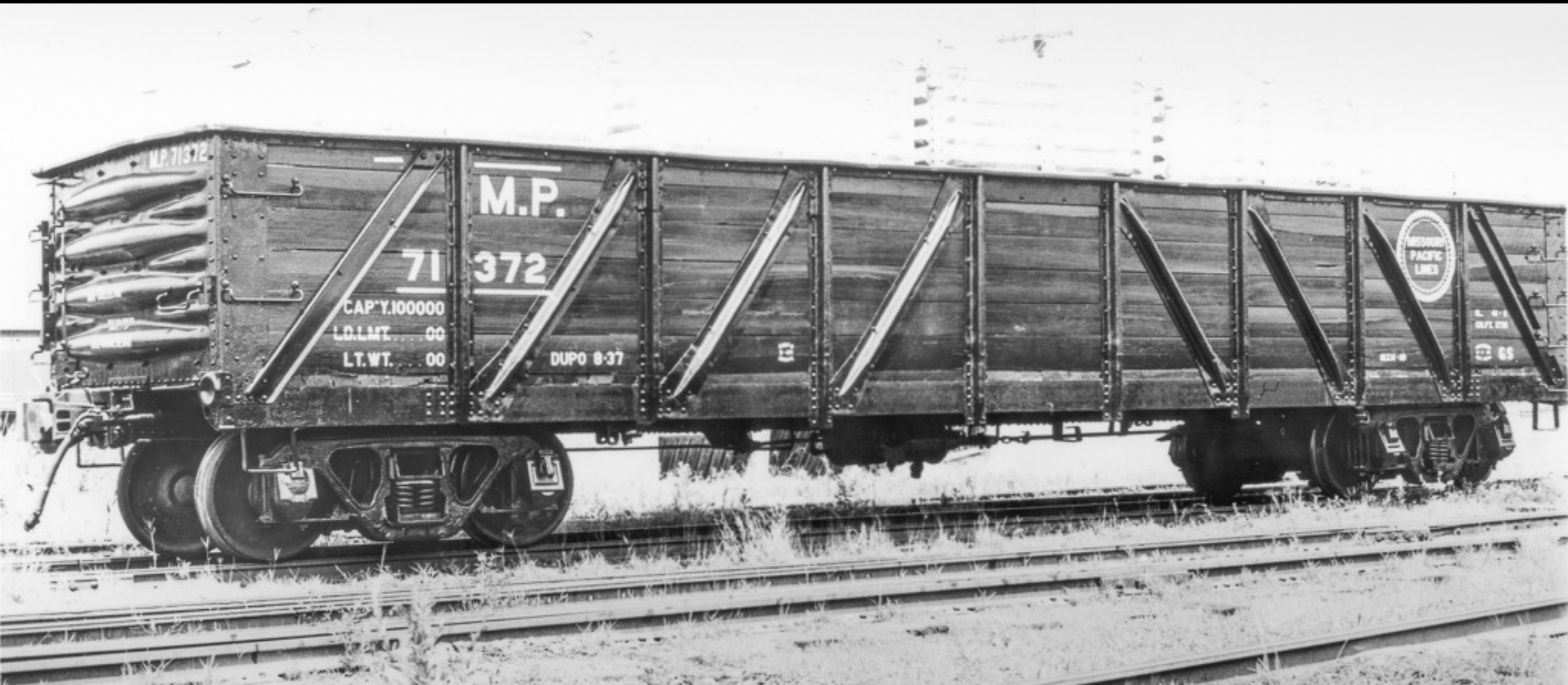
Kitbashing USRA-design Gondolas

Missouri Pacific

3,000 cars; 70501-73500



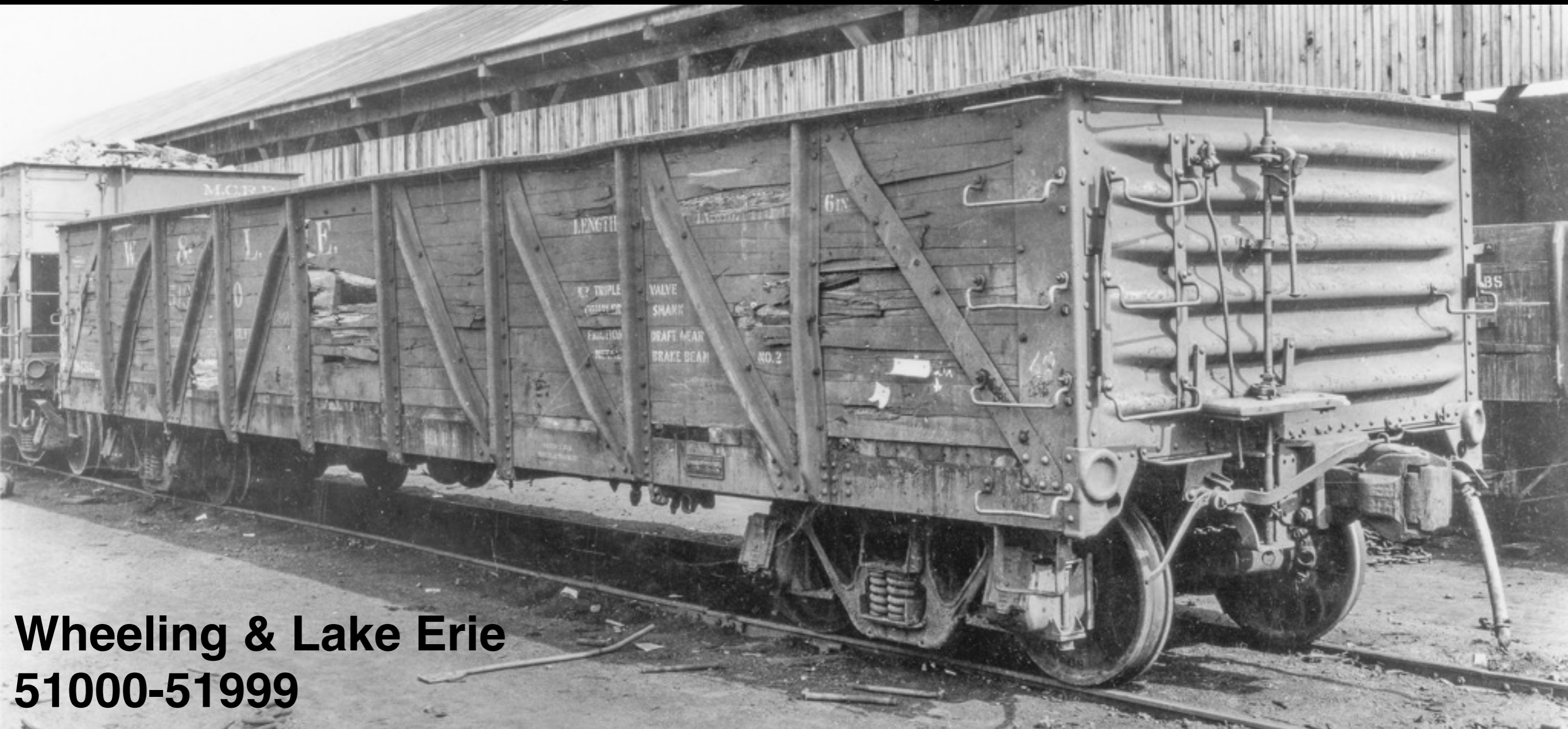
Kitbashing USRA-design Gondolas Missouri Pacific



Joe Collias Collection

Note channel sections in end panels and replacement
Dreadnaught ends

Kitbashing USRA-design Gondolas



**Wheeling & Lake Erie
51000-51999**



both photos - Hagley Museum & Library

Kitbashing USRA-design Gondolas

Boston & Maine

1,500 cars; 90000-91499



Note replacement
Dreadnaught end

Kitbashing USRA-design Gondolas

Gulf, Mobile & Ohio

Mobile & Ohio 55200-55699



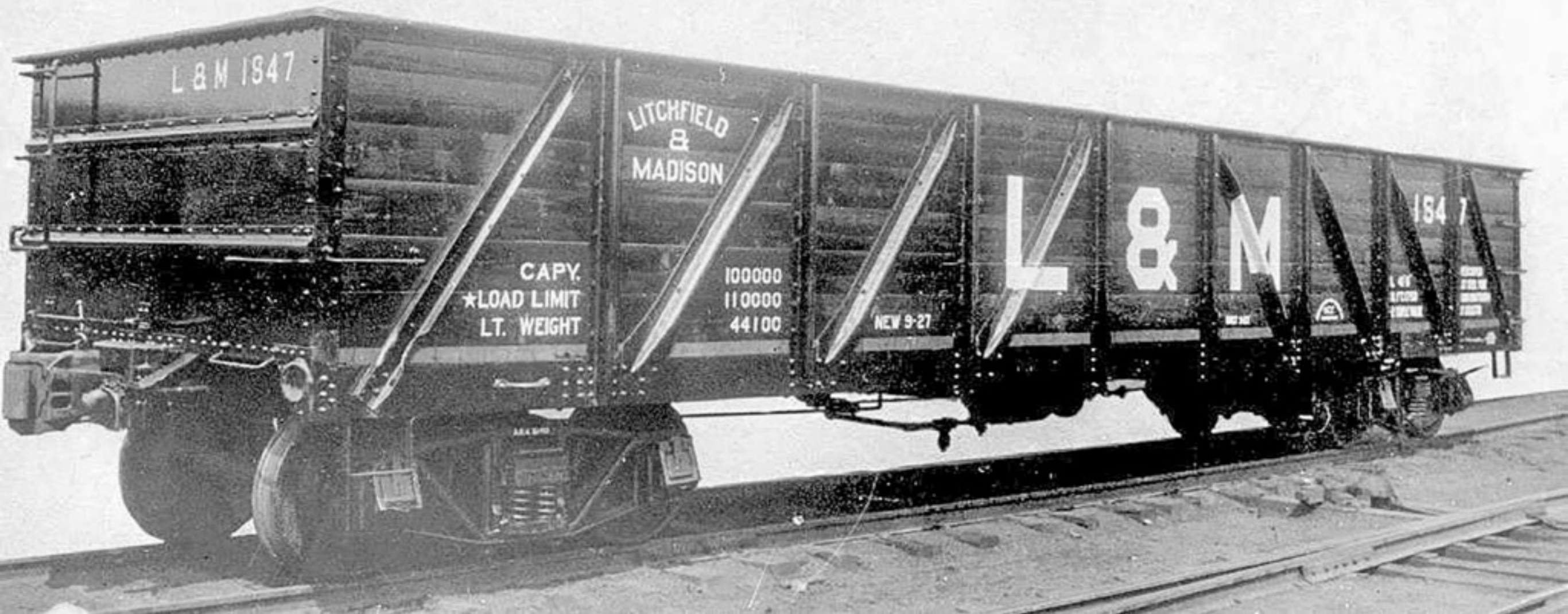
Kitbashing USRA-design Gondolas

Gulf, Mobile & Ohio



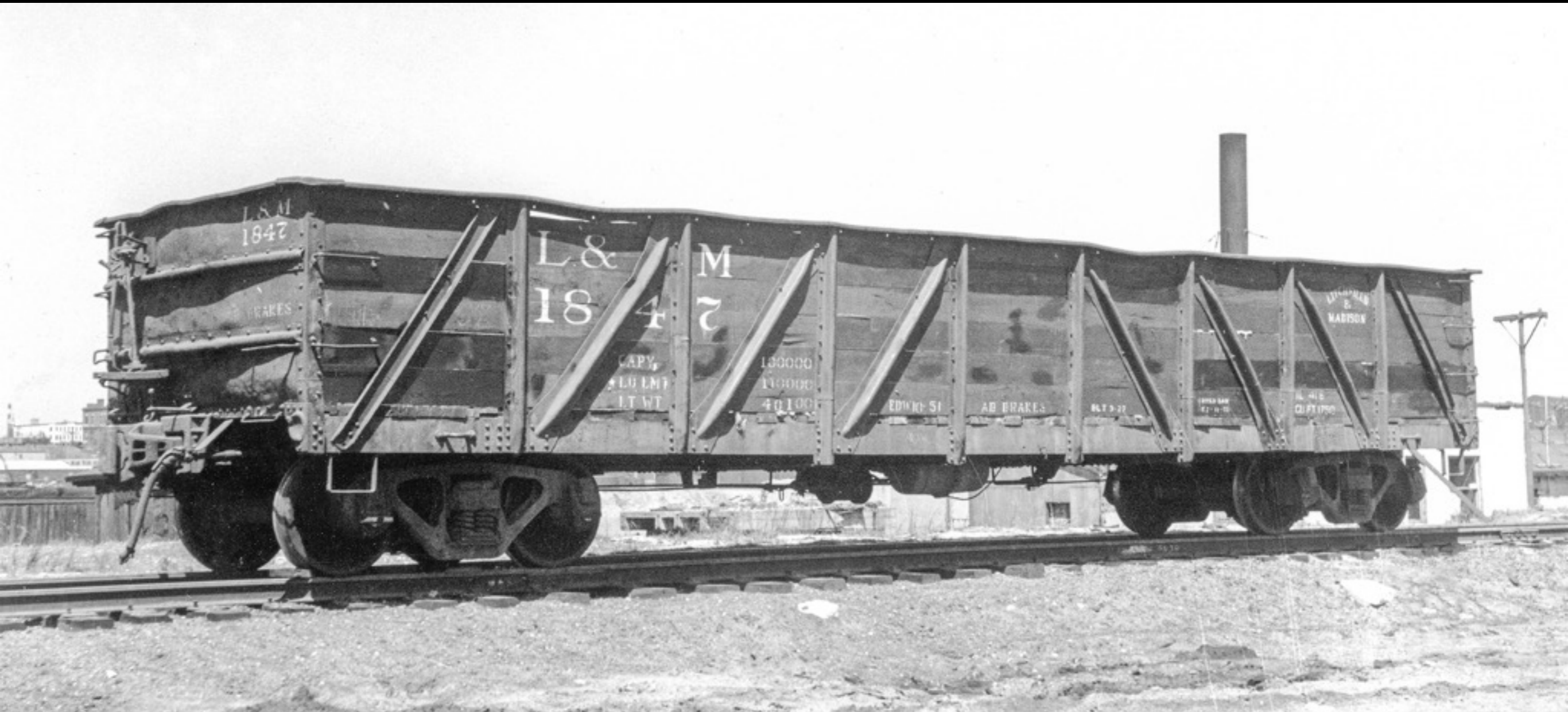
Kitbashing USRA-design Gondolas

Litchfield & Madison
1301-1400; 1701-1847



Kitbashing USRA-design Gondolas

Litchfield & Madison



courtesy of Randy Hammill

Kitbashing USRA-design Gondolas

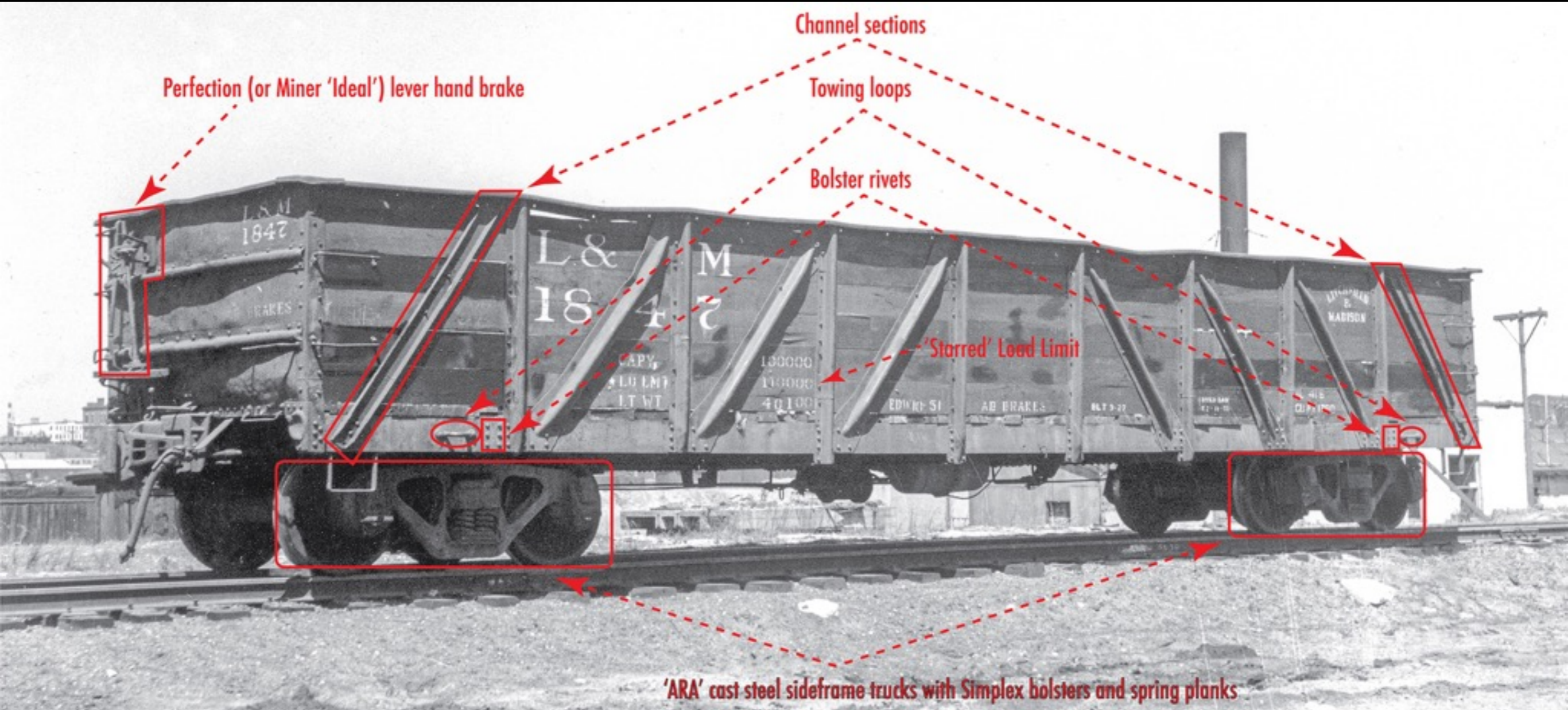
Building a Litchfield & Madison Gondola



Modeling considerations...

Kitbashing USRA-design Gondolas

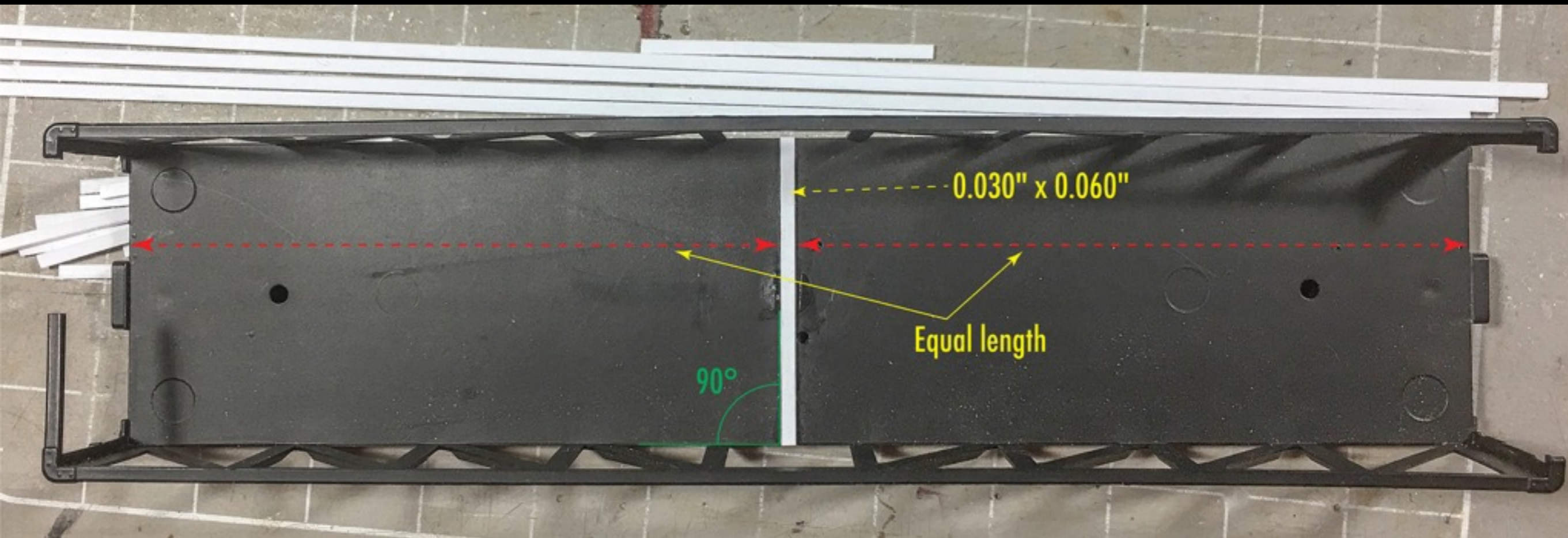
Building a Litchfield & Madison Gondola



Modeling considerations...

Kitbashing USRA-design Gondolas

Building a Litchfield & Madison Gondola



Adding the floor boards

Kitbashing USRA-design Gondolas

Building a Litchfield & Madison Gondola



Adding the floor boards

Kitbashing USRA-design Gondolas

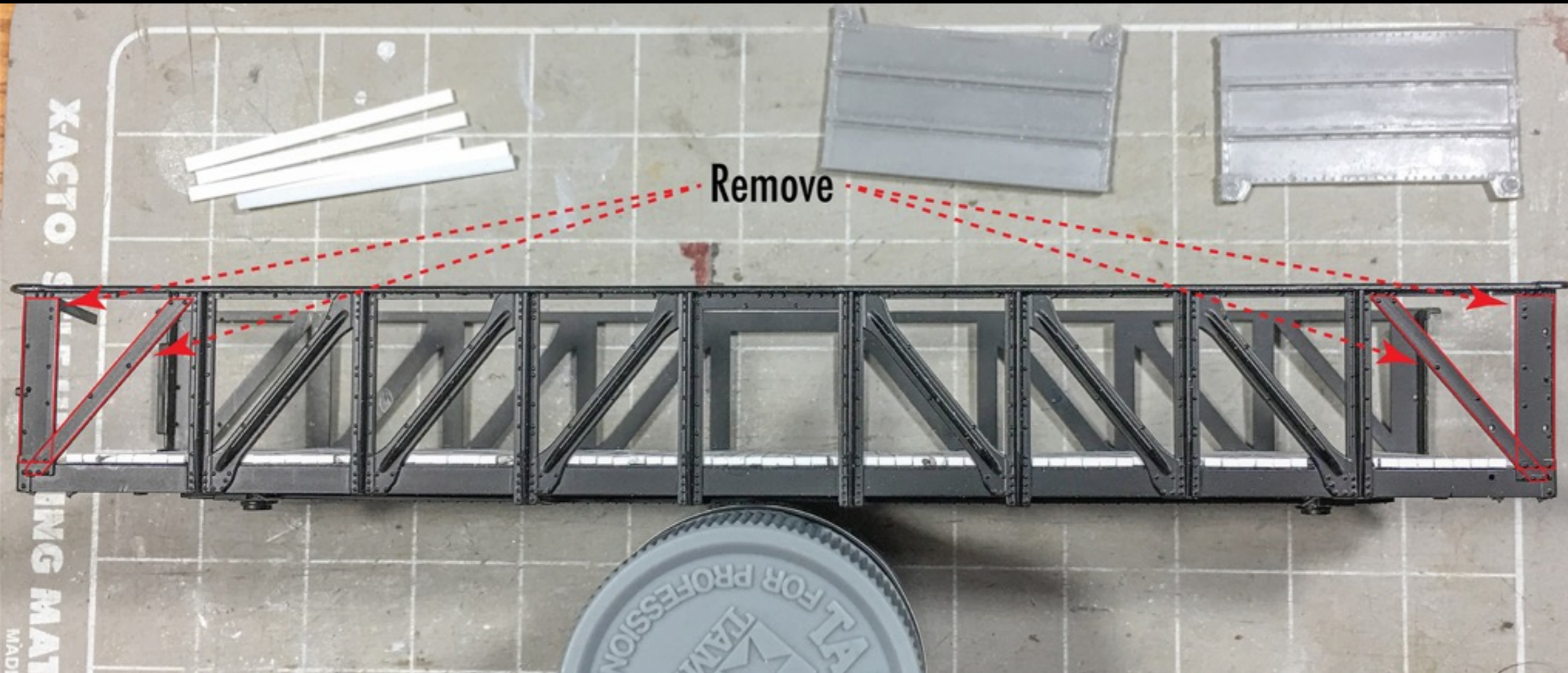
Building a Litchfield & Madison Gondola



Adding the floor boards

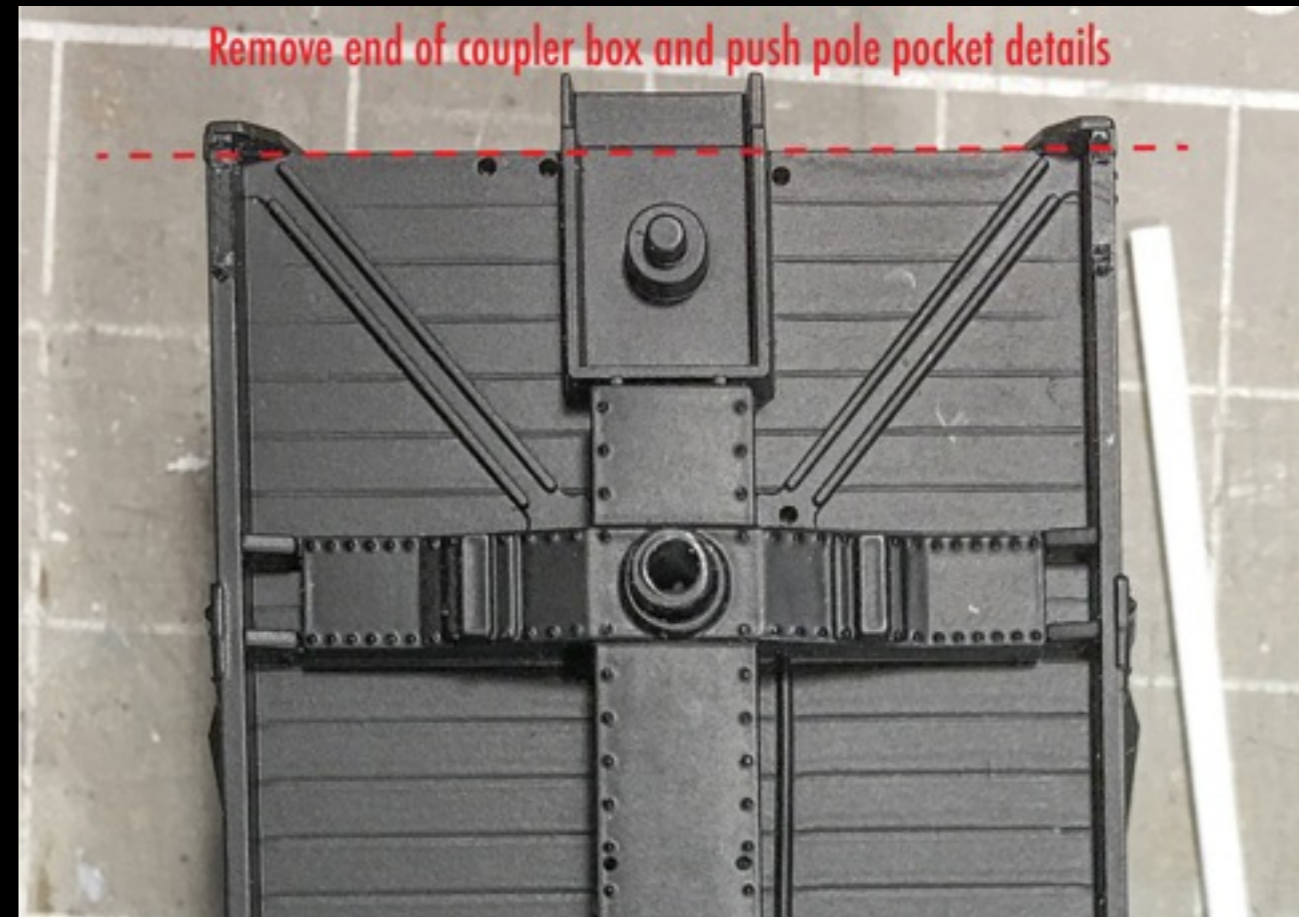
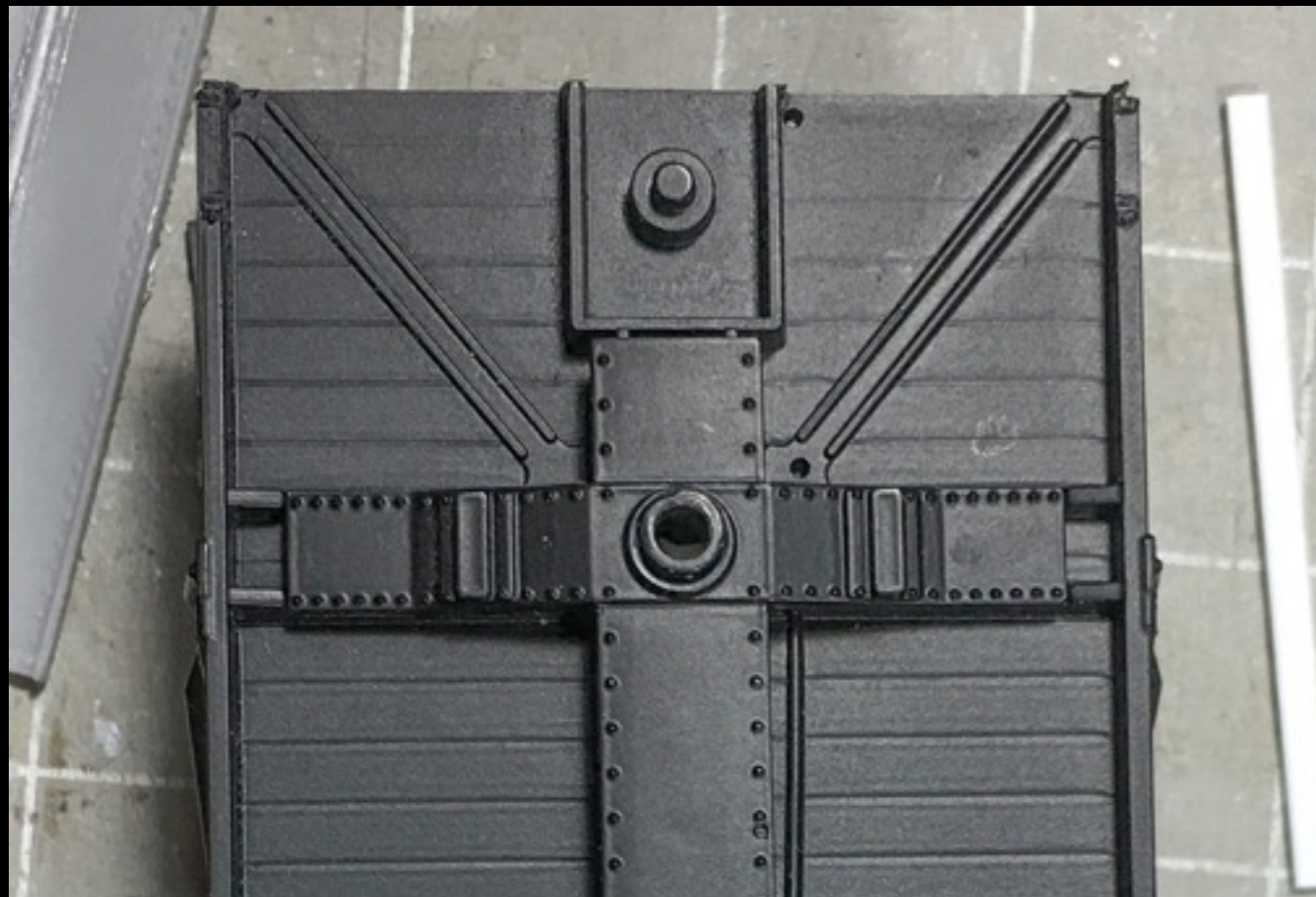
Kitbashing USRA-design Gondolas

Building a Litchfield & Madison Gondola



Kitbashing USRA-design Gondolas

Building a Litchfield & Madison Gondola



Remove extraneous end details

Kitbashing USRA-design Gondolas

Building a Litchfield & Madison Gondola

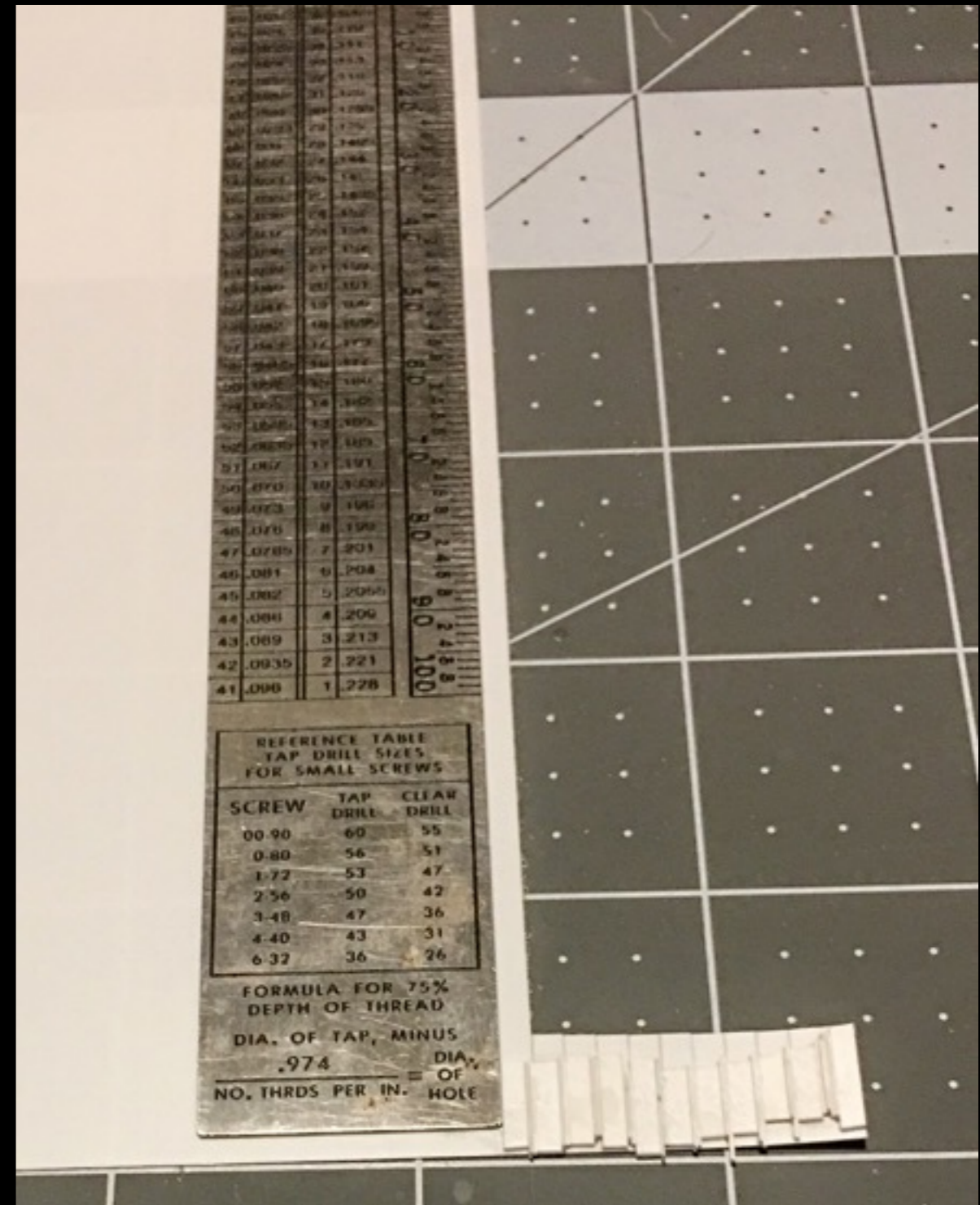


Remove extraneous end details



Kitbashing USRA-design Gondolas

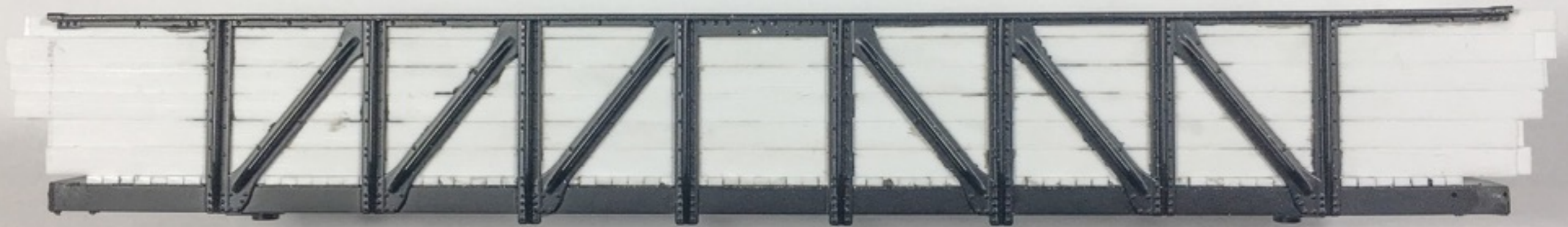
Building a Litchfield & Madison Gondola



Making "custom" styrene strips

Kitbashing USRA-design Gondolas

Building a Litchfield & Madison Gondola

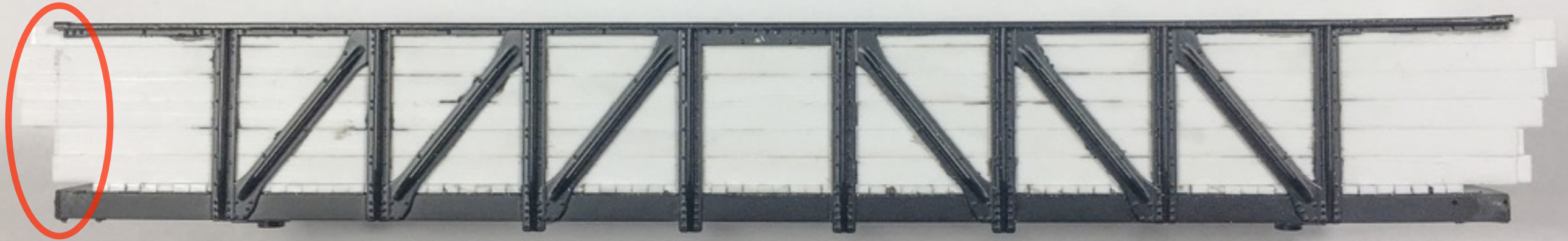


Floor and side boards completed

- Floor boards (for HO) are 0.030" x 0.060"
- Lower five side boards (for HO) are 0.010" x 0.105" strips glued back to back = 0.020" x 0.105"
- Upper side board (for HO) is 0.010" x 0.080" strips glued back to back = 0.020" x 0.080"

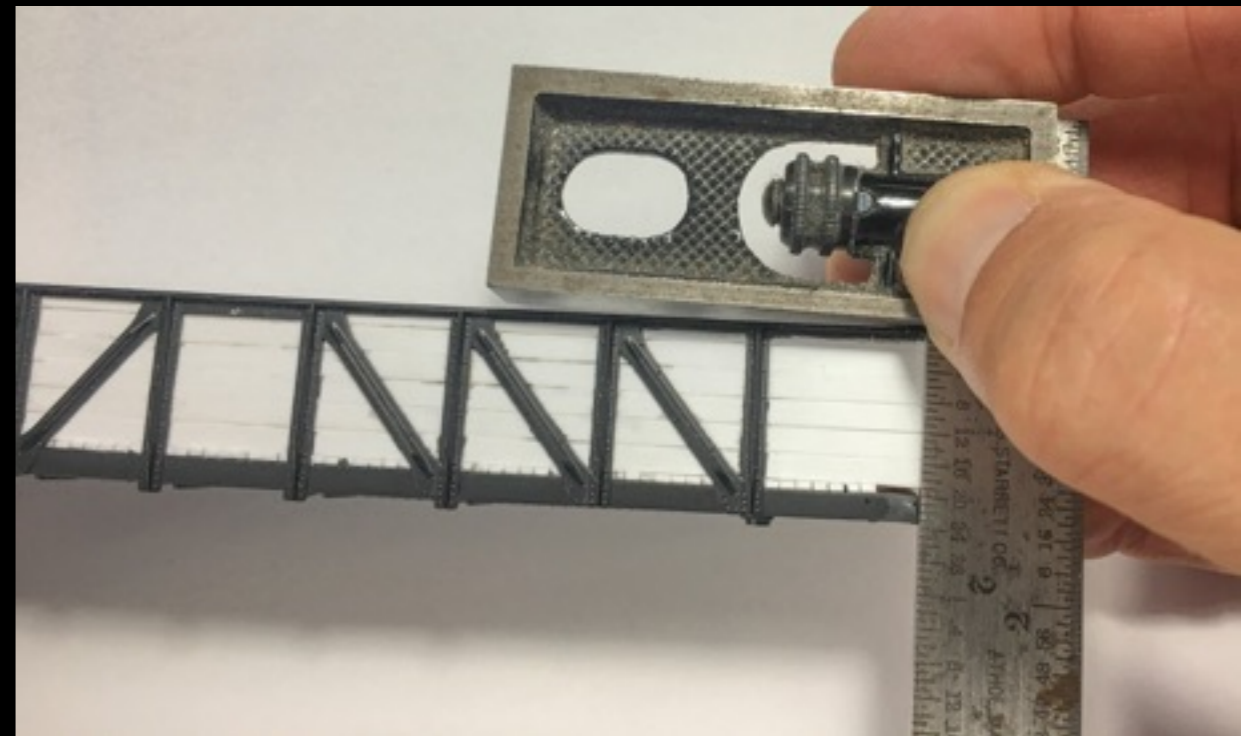
Kitbashing USRA-design Gondolas

Building a Litchfield & Madison Gondola



Floor and side boards completed

- mark straight line at ends, as shown above, using a square, as shown at right
- when trimming, use the end sill as a “stop” and the marked line as a guide
- trim ends with sprue nippers



Kitbashing USRA-design Gondolas

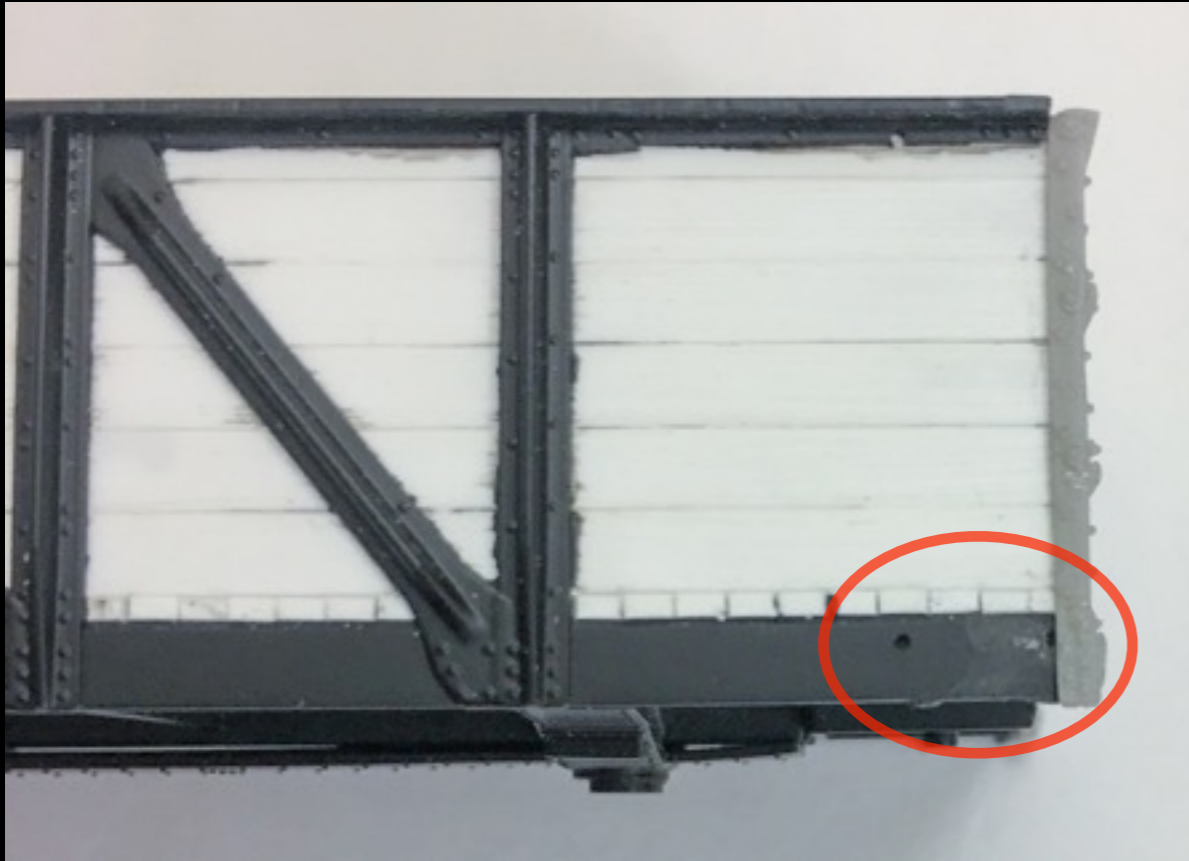
Building a Litchfield & Madison Gondola



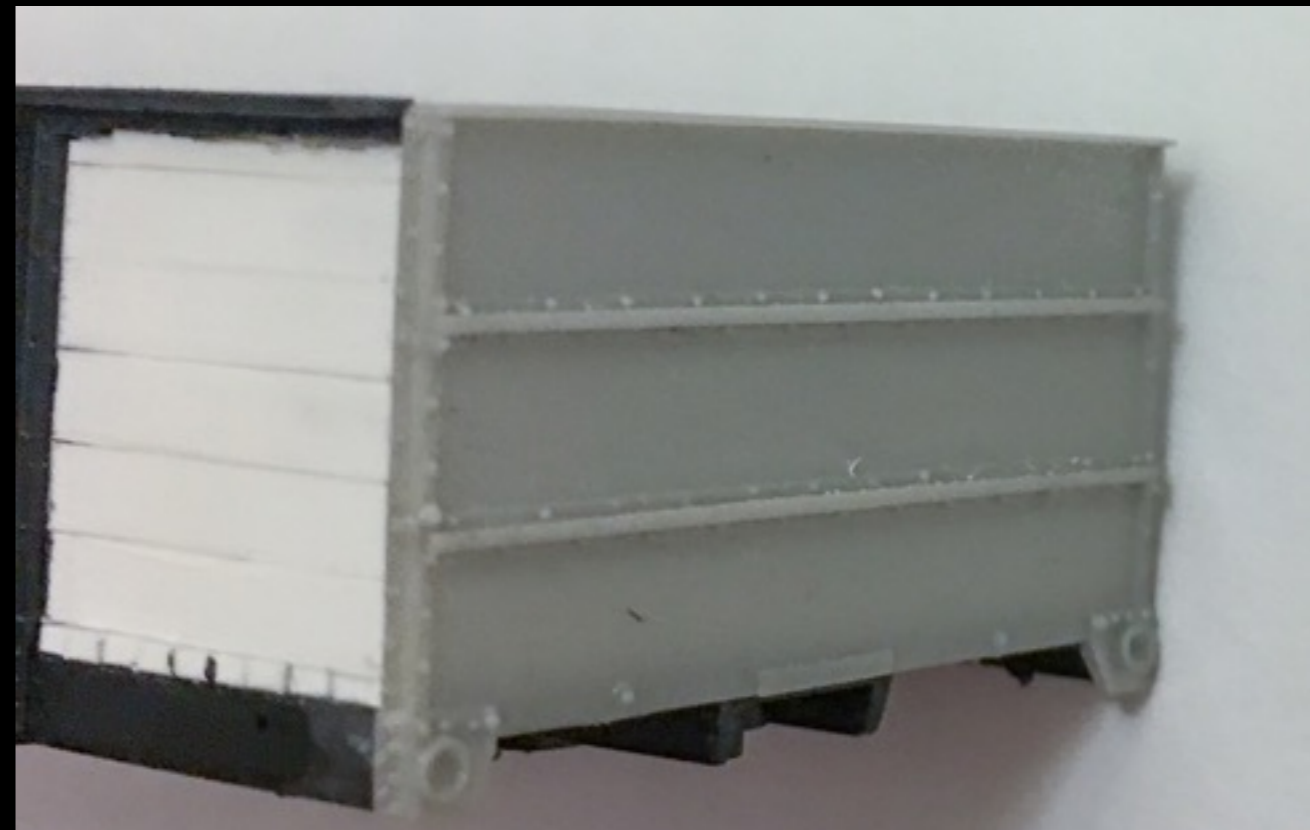
With boards trimmed, add ends. Ends of boards “nest” inside edges of corners of ends.
Side boards could be added after ends, if that is your preference.

Kitbashing USRA-design Gondolas

Building a Litchfield & Madison Gondola



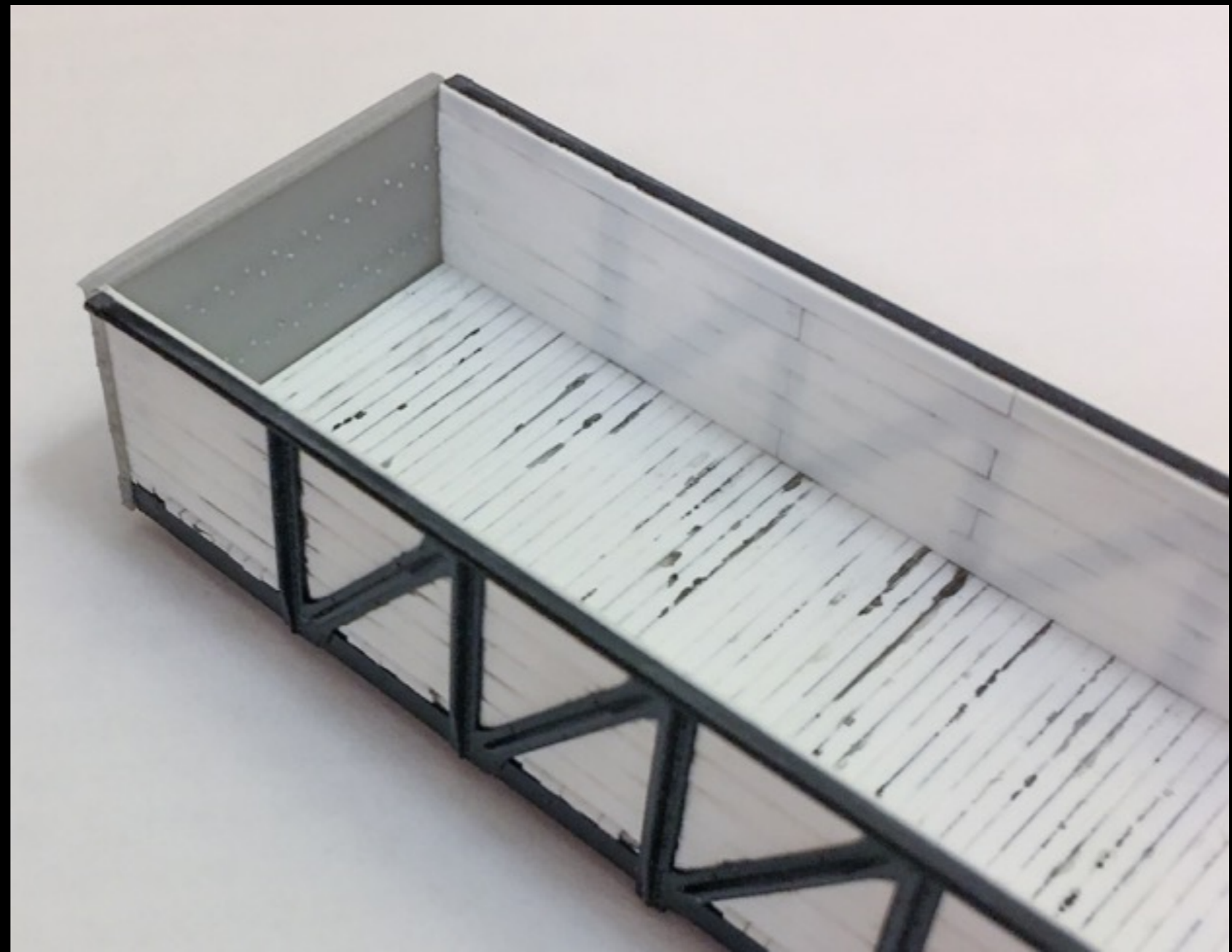
- Note how boards “nest” behind corner
- End floor boards are flush with side sill to accommodate end corner and diagonal channel sections (not added yet)



Kitbashing USRA-design Gondolas

Building a Litchfield & Madison Gondola

- In addition to diagonal channels in end side panels, also need to add gussets/caps that join the angles on the top of the sides and ends (I will scratch, but Tichy offers the part)



Materials List - HO scale

(or what you get and what you need)

Given:

- IM kit parts
- Strip styrene
- Resin ends
- Decals

Need:

- AB brake parts (if modeling)
- Diagonal brace material (styrene or brass)
- Trucks - arch bar or Buckeye from Tahoe (neither has the Simplex bolsters, unfortunately)
- Precision Scale Miner Ideal lever hand brake (to simulate Perfection hand brake)
- Earlier decals (working on these... need better quality builder's photo)
- Tichy or scratch gusset/caps for top corners
- Sill steps (A-Line will work)
- Paint
- Couplers
- Grabs
- Wire
- If building a drop door version, obtain laser cut floor from Intermountain

References

- “USRA Composite Gondola,” James E. Lane, *Mainline Modeler*, July/August 1981. Includes roster of USRA cars and drawing
- “USRA Freight Cars: An Experiment in Standardization,” James E. Lane, *Railroad History* no. 128, Railway & Locomotive Historical Society, 1973. Includes roster
- “USRA 50-ton 41-foot 6-inch Composite Gondolas from Intermountain and Proto 1000 HO Scale Models,” Richard Hendrickson, *Railmodel Journal*, February 2000
- “USRA Composite Gondola: Construction in HO Scale,” Robert Hundman, *Mainline Modeler*, September 1981
- “Missouri Pacific Gondola Cars Built 1912-1960,” Carson Houston, *The Eagle*, Fall 2009 (Missouri Pacific Historical Society)

Thank you

- Randy Hammill
- Richard Hendrickson
- Bob Hundman
- James E. Lane
- Jerry Stewart
- Bill Welch

- Mike Skibbe

Kitbashing USRA-design Gondolas

Building a Litchfield & Madison Gondola

If you are reading this somewhere besides the meet at which it was presented, be aware that there is a demonstration component not included in this file.

This file will be posted to:

prototopics.blogspot.com

This file will be updated as my model is completed